

*Sigma Nu*

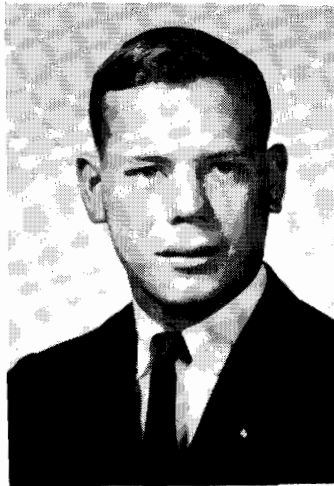


*Mu Chapter*  
*University of Georgia*  
*1962-1963*



**CHARLIE DAVIDSON**

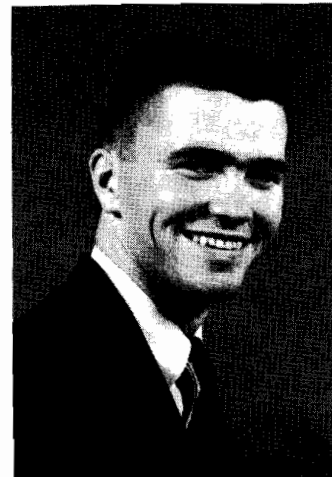
Atlanta  
Commander



**JIMMY BISHOP**

Alma  
Lt. Commander

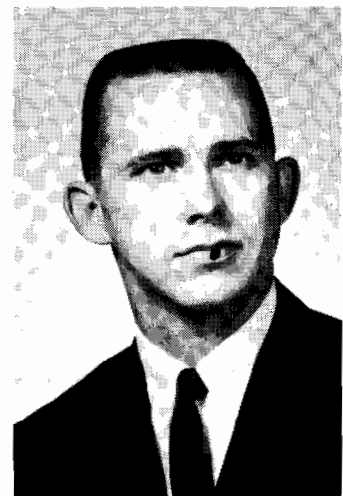
President,  
Southeastern IFC  
Secretary, Biftad  
Treasurer, University  
of Georgia IFC



**TOMMY JOHNSON**

Macon  
Secretary

Editor, Red & Black  
Man of Year  
Greek Horseman  
Gridiron  
Sec.-Treas. Senior  
and Junior Class  
President, Biftad  
Commander  
Pershing Rifles



**E. H. CULPEPPER**

Cordele  
Treasurer

*Officers  
Mu Chapter  
of Sigma Nu  
1962*

Chrm. Student  
Government Ass'n  
of Georgia  
Vice President  
Student Council  
President Agronants  
ODK, Phi Kappa

# I n t r o d u c t i o n

This booklet is designed to introduce you to Mu Chapter of Sigma Nu Fraternity at the University of Georgia.

It's not intended as a propaganda tool—as are many other publications of this type. Rather, its purpose is to orient you to our chapter's members, officers, alumni and associated activities.

It is hoped, however, that this booklet will assist you in making your decision about: first, fraternity life in general; and second, which fraternity is best for you.

It is not our intention to compare one fraternity with another. That task belongs to you and only you. We only hope to give you a brief glimpse of Sigma Nu.

There are 128 active collegiate chapters of Sigma Nu National Fraternity. The total membership as of August, 1962, totals 88,416.

Mu Chapter of Sigma Nu at the University of Georgia holds the record for the most number of men initiated with a total membership of 1,282. We average between 80-100 men per year, including brothers and pledges.

The background and rich heritage of Mu Chapter is one to which we point with pride and devotion. Ours is the ninth oldest Sigma Nu Chapter, being founded in 1873.

Our alumni lists among its ranks some of the most prominent men in the nation. Former Georgia governor and now U. S. Senator Herman E. Talmadge and former Secretary of Health, Education and Welfare Marion Folsom are just two of the scores who have won national acclaim.

But let's look at the present and the future.

Our chapter's position in campus leadership was reaffirmed during the past year. Here's a sampling:

A Sigma Nu was elected president of the Southeastern Interfraternity Council.

A Sigma Nu edited the Red and Black, University of Georgia newspaper.

A Sigma Nu was elected president of the freshman class.

A Sigma Nu was elected president of the sophomore class.

A Sigma Nu was elected secretary-treasurer of the Senior class.

A Sigma Nu was elected to Phi Beta Kappa.

A Sigma Nu from Mu Chapter was selected Man of the Year for the entire Fraternity.

A Sigma Nu was selected as one of 10 college men in the United States to attend a national clothing conference, being picked to represent every major college and university in the South in his views.

A Sigma Nu was selected as chairman of the Student Government Association of the State.

One Sigma Nu was elected president and one secretary of Biftad, highest undergraduate honorary society at the University.

A Sigma Nu was tapped for membership in Gridiron, highest non-scholastic honorary society at the University.

A Sigma Nu was tapped for membership in Greek Horsemen, the highest honor bestowed upon a fraternity man at the University. Only five are selected each year.

The list could go on and on . . . Brothers of Mu chapter, such as Rooks Boynton, have excelled in athletics. Others, such as Brother Toby Blalock, have excelled in church work.

Certainly, by reviewing the accomplishments of these many brothers in so many fields you quickly can tell why we're proud of our chapter's membership.

Our house, located on scenic River Road, is one of the most distinctive and attractive of its kind

anywhere in the nation. It is shown on the cover of this publication.

It will sleep approximately 40 men and has a spacious dining area. Its recreational facilities are unexcelled anywhere on campus, and our "Snake Pit" is unchallenged as the No. 1 Party Room of Georgia fraternities.

Top-name entertainers perform at parties throughout the school year at the chapter house, which features a large downstairs area for dancing.

Expenses incurred by Mu Chapter brothers are about average as compared with those of other social fraternities. We'll probably be able to give you a better idea of this during fall rush, and then will be able to map out in exact detail just what pledgedship and membership cost.

Fraternity membership, we feel, is an investment in a four-year program of personality development which almost invariably returns big dividends.

A fraternity, through tradition and group association, can be of great assistance in making the adjustment to college life. The fellowship and friends made go a long way in bridging the gap between home and college environments.

Our chapter's excellent program of social activities provides pleasant interludes throughout the college year.

And fraternity membership doesn't end with graduation from college. Alumni clubs function in principal cities through the state and nation, serving as common ground in strange localities.

In closing, let us urge you to visit us during Rush Week, meet and get to know us as your fellow students, and discuss with us the truths and myths about fraternities.

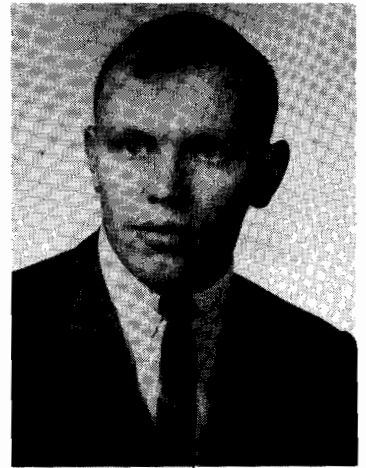
And let Sigma Nu be among the first to wish you a happy and successful college life.



# Student . . .



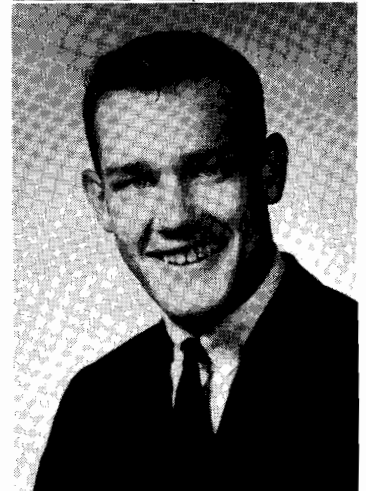
**BEN GARLAND,**  
Jackson  
President  
Freshman  
and Sophomore  
Classes



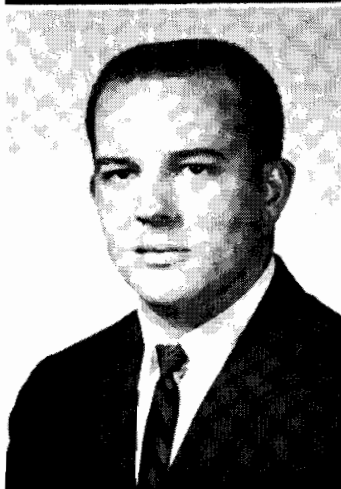
**DON ROUNTREE,**  
Dawson  
Editor  
Red and Black



**JOHN WITHERS,**  
Atlanta  
Sports Editor  
Red and Black



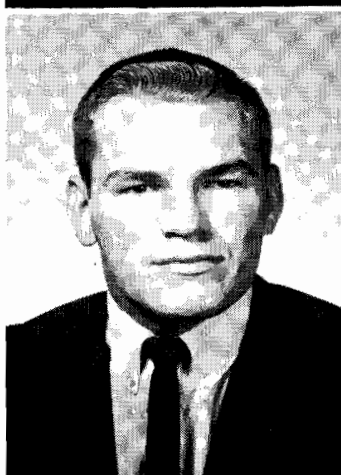
**DEDI THOMAS,**  
Patterson  
Past Commander  
Sigma Nu  
Interfraternity Council  
Representative 3 years



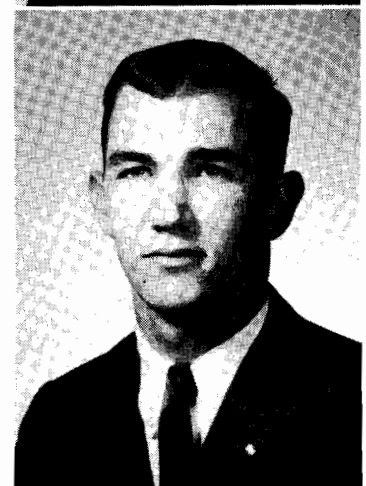
**RONNIE WALKER,**  
Hinesville  
Past Commander  
Sigma Nu  
Man-of-Year  
IFC Vice-Pres.



**JERRY WEAVER,**  
Cedartown  
Phi Beta Kappa  
Who's Who in American  
Colleges and Universities



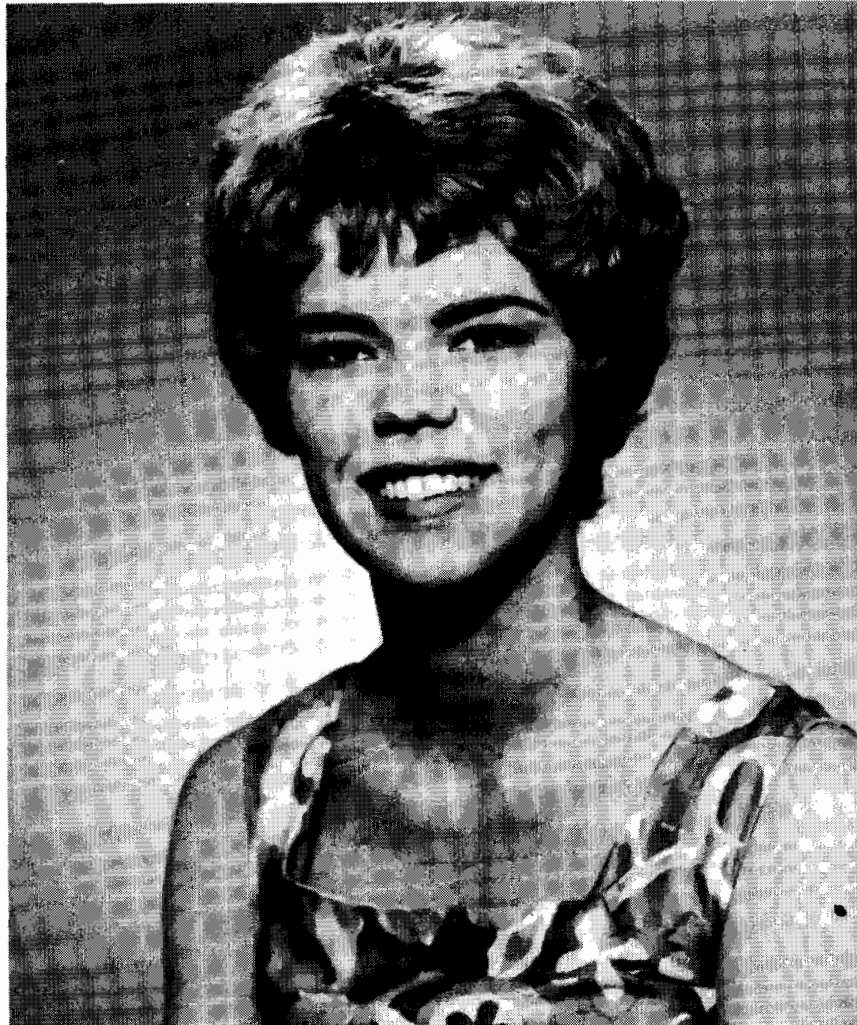
**TOBY BLALOCK,**  
Clayton  
President  
Baptist Student  
Union



**ROOKS BOYNTON,**  
Adel  
Center  
Football Team

. . . *Leaders*

# Sweetheart



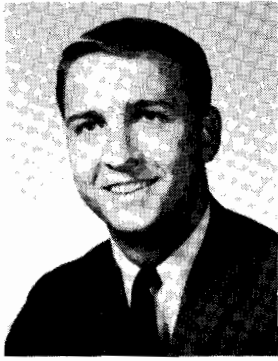
## of Sigma Nu

*Jolaine Wood*

*Atlanta*

Jolaine, who was selected as Sweetheart of Sigma Nu Spring quarter to serve during the coming year, is Secretary-Treasurer of Kappa Alpha Theta sorority. She has been a cheerleader for the past two years, a member of Alpha Lambda Delta scholastic honorary society, a member of the Bulldog Club, and member of the Women's Recreation Association. But best of all, we think, is that she's our Sweetheart.

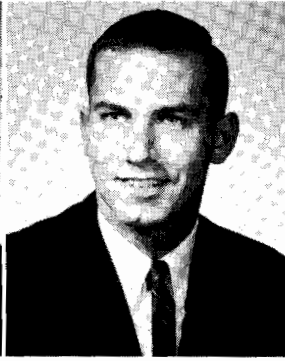




WALTER HAYES  
Colquitt



DUNBAR DYCHES  
Augusta



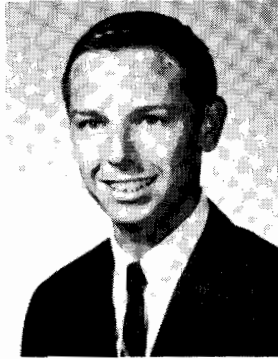
HARRY THOMPSON  
Jesup



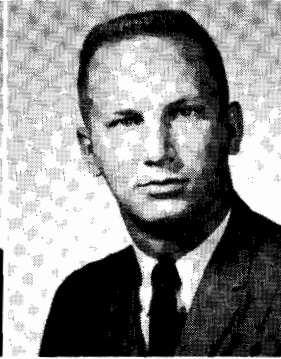
DON GUIN  
Haynesville, La.



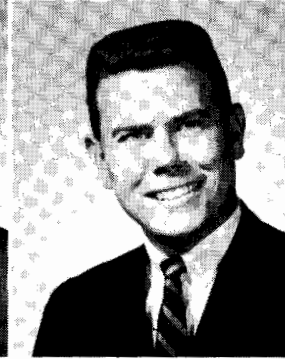
BOB HAMMARLEY  
Mt. Prospect, Ill



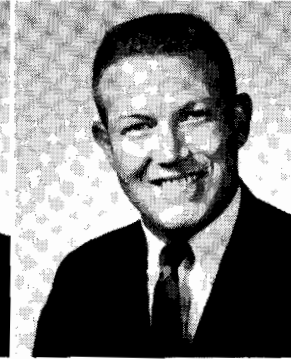
JOHN RAMSEY  
Macon



CHICK RAMY  
Atlanta



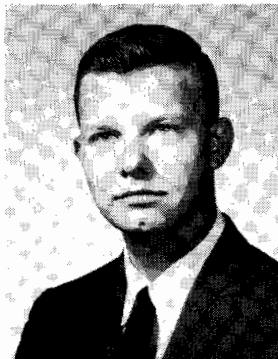
JIMMY RICE  
Blakely



VAUGHN ROGERS  
Clayton



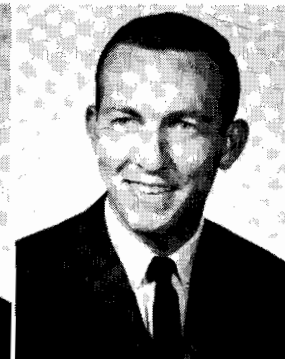
DOUG ROSS  
Athens



RANDALL USSERY  
Baxley



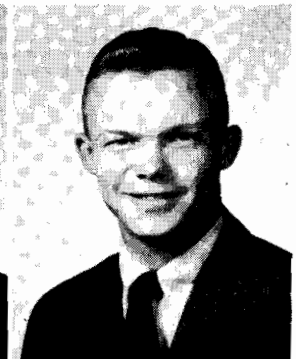
BARRI VICKERS  
Macon



BOB HARTLEY  
Macon



BILL GREENE  
Adel



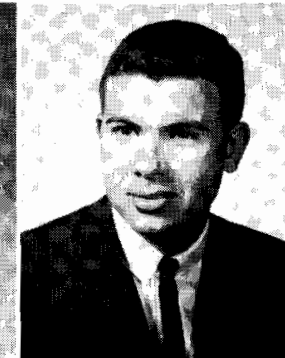
JIMMY GRIFFIN  
Rutledge



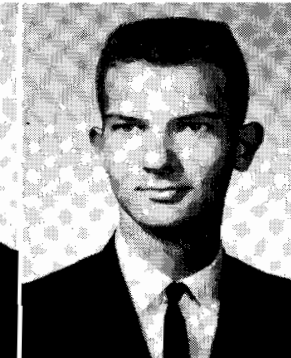
TONY ROYAL  
Atlanta



HAL McNEELY  
Toccoa



SONNY MILLER  
Cartersville



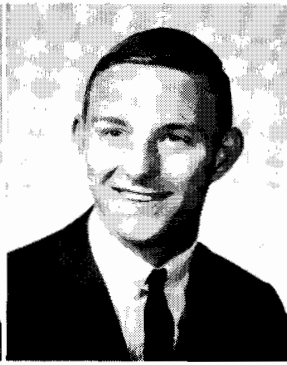
MILTON MINTER  
Donalsonville



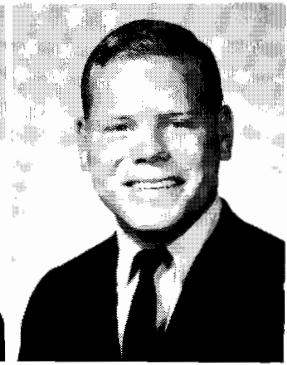
BUTCH MITCHELL  
Athens



DICK TAYLOR  
Jacksonville



CECIL NEWSOME  
Sandersville



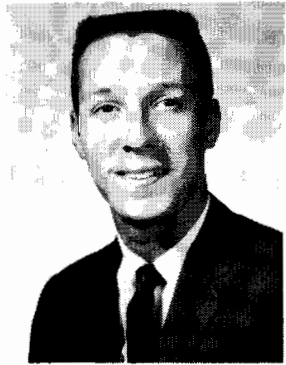
HENRY BISHOP  
Alma



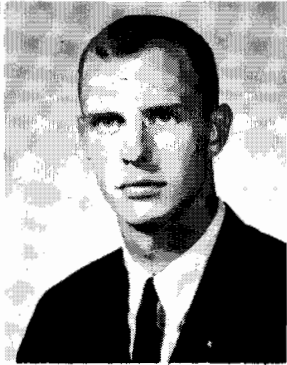
CLAYTON PRICE  
Toccoa



LAMAR GEORGE  
Blakely



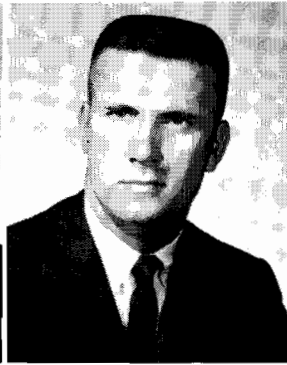
JOHN PEEBLES  
Alamo



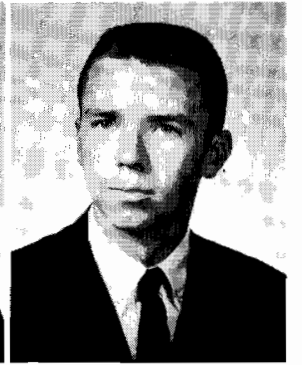
TED PERKINS  
Tryon, N. C.



DAVID PERRY  
Carrollton



PETE PETERSON  
Wadley



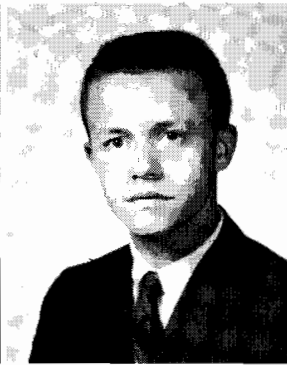
GENE TALMADGE  
Lovejoy



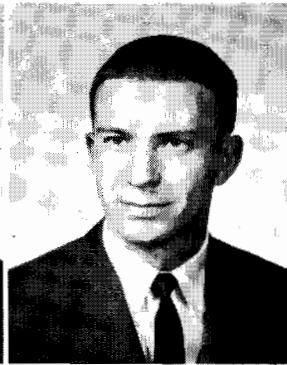
RALPH CAVENDER  
Claxton



KEITH CHAPIN  
Chapel Hill, N. C.



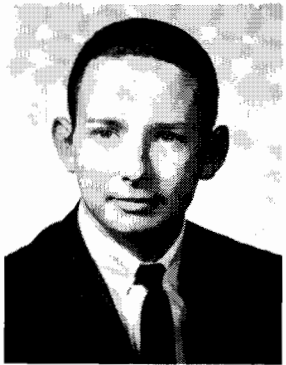
DEAN TALLEY  
Carrollton



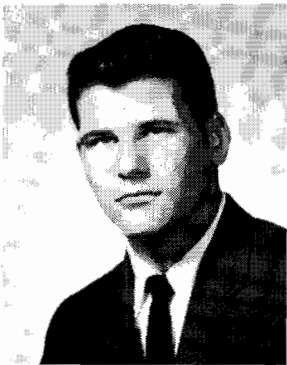
TOM CLARY  
Augusta



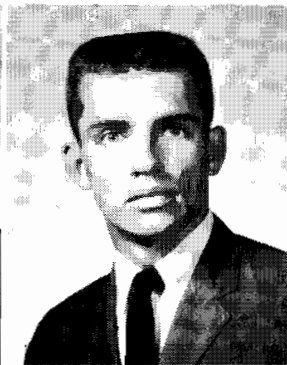
DENNY CLEMENTS  
Atlanta



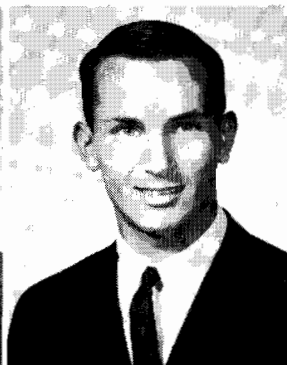
TALLY BRIM  
Dawson



JACK EASTLAND  
Atlanta



WAYNE EXLEY  
Cuthbert



PHILLIP FANNIN  
Columbus



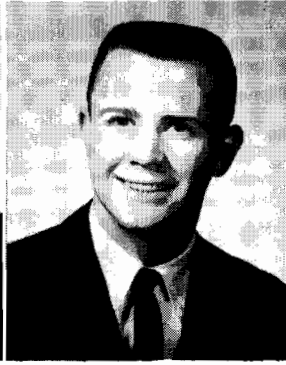
CHARLIE CASTLEBERRY  
Monroe



KENNY WILLIAMS  
Douglas



JIMMY WILSON  
Carrollton



JERRY WILSON  
Bremen



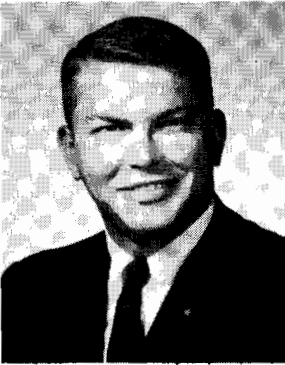
ROBERT WILSON  
Carrollton



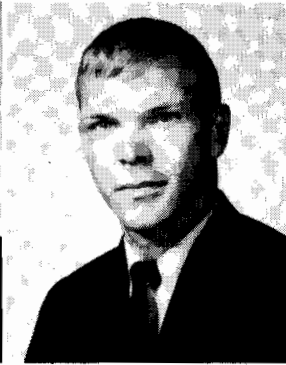
JOE BLALOCK  
Clayton



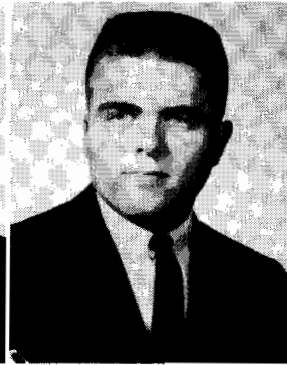
JACK OUTZS  
Augusta



MAX PARKER  
Pine Mountain



JOE DEGRANDIS  
Macon



NELSON DOBBS  
Carrollton



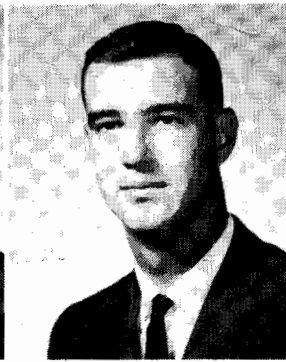
JIM DOUGLAS  
Macon



HARRY STEVENS  
Athens



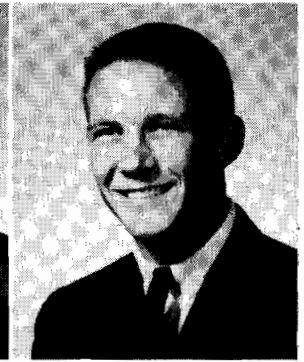
ROGER LAND  
Albany



IRV LAND.  
Allentown



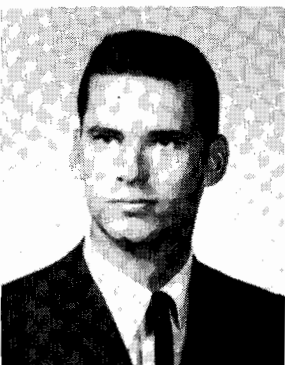
BERNARD LOWERY  
Monroe



DAVID MADRAY  
Jesup



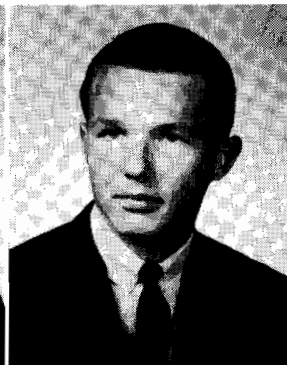
TOMMY BUCKLEY  
Atlanta



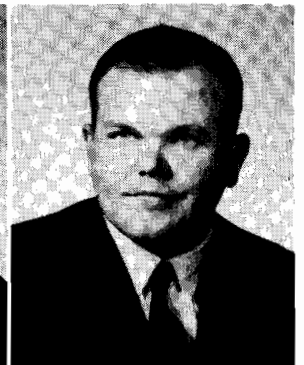
TOM SMITH  
Stark, Fla.



BEAU BRASINGTON  
Waycross



BUDDY NIX  
Commerce



KEN THOMAS  
Patterson





DAVID ALEXANDER  
Atlanta



EARL SEAGRAVES  
Athens



BROUGHTON BENNETT  
Alma



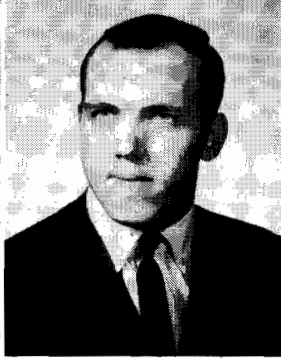
TOMMY BARR  
Cuthbert



ALLEN BATCHELOR  
Carrollton



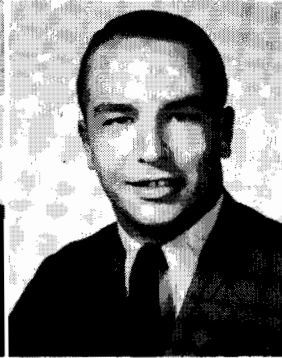
WALTER TERRY  
Cuthbert



PATE BRIDGES  
Bainbridge



RALPH SHAW  
Stark, Fla.



DOUG JONES  
Carrollton



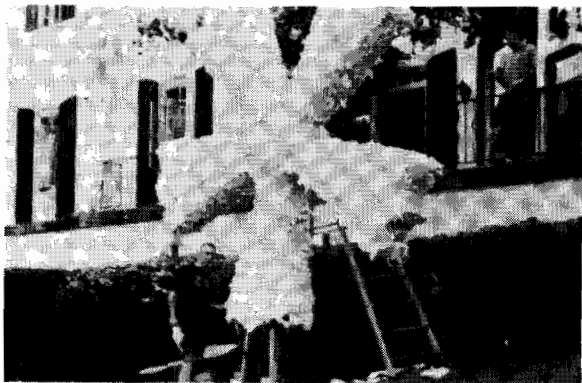
BOB WILKINS  
Rome



At The "Pit"



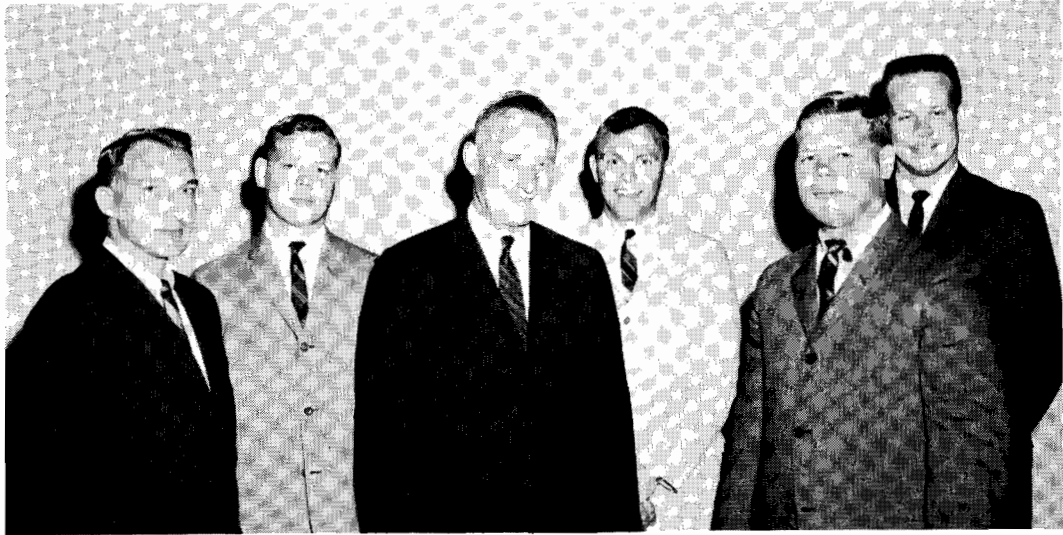
At Chow



Getting Set For White Star



At Study ? ? ?



**RICHARD FLETCHER**, center, executive secretary of Sigma Nu, was in Athens this past Spring to address the annual Interfraternity Council-Panhellenic Council banquet. Members of Mu Chapter shown with Mr. Fletcher are, left to right, Dedi Thomas of Patterson, Jimmy Bishop of Alma, Ben Garland of Jackson, Henry Bishop of Alma, and Don Rountree of Dawson.



**SWEETHEART JUDY CAVENDER** and Commander **Charlie Davidson** are shown as announcements are made of the new members of the Sweetheart Court for 1962-63. Judy was last year's sweetheart.



**MEMBERS** of the 1962 Sweetheart Court are pictured during a break in the festivities of the annual Spring White Star Formal held in May.



**PARTYING** is a facet of campus life in which Mu Chapter always excels. Top-name entertainers highlight social functions throughout the year, and you can bet that we're never outdone with our parties.

# The Creed of Sigma Nu

By WALTER JAMES SEARS

**TO BELIEVE IN THE LIFE OF LOVE;** to win in the fresh morning of our youth the loyal love of faithful friends, who will go with us unmoved into the darkening shadows of life's closing day; and so to seek and to find, to have and to hold the friendships that will abide. To think of God as the common Father of all men, and all men as a common brotherhood, thus recognizing the continuity of the Divine and the solidarity of the human life. To build somewhere in the wide world the sheltering walls of a home, however humble and obscure, where Love shall glorify the wife, Duty enshrine the mother, and Affection ennoble the child. To keep green the sainted memory of our loved and lost, their faults forgotten, their virtues enshrined in our hearts forever. To try bravely to do unto our fellowmen as we would they should do unto us, reckoning not their lineage nor their wealth, but esteeming their manhood above their badge of rank. To let our lives be led by the spirits of Gentleness, Justice and Mercy. And so to be true to the Knighthood of Love. ★ ★ ★ ★ ★ ★ ★ ★ ★ ★ ★ ★ ★ ★ ★ ★

**TO WALK IN THE WAY OF HONOR;** to exalt the fundamental virtues of the race; and, prizing every noble impulse, to realize so deeply the baseness of deceit, that no obligation will be more binding than our plighted word. To be steadfast in the performance of every trust, and, spurning the gaudy gifts of greed and power, to be content to live by our knightly vow that our Honor is dearer to us than our lives; and so to esteem the man's character first, his culture second, his pedigree not at all, unless he be worthy of it. Emulating the chivalrous deeds of courtesy, and sealing not our hearts against the touch of tenderness, to win the love and care of some incorruptible woman. And so to be loyal to the Knighthood of Honor. ★ ★ ★ ★

**TO SERVE IN THE LIGHT OF TRUTH;** to open wide, Life's windows to the revelations of heaven and earth. Avoiding the Phariseism that belittles the soul and scorning the bigotry that blights the mind, to respect every altar of faith built in God's name, by every sincere worshiper, to whom, if we cannot give our sympathy, we shall not deny the kindness of our manly silence; and, whatever our creed, to reverence the Christ as the Divine Compassion for struggling humanity—a compassion that, giving the world its gospel of human service, saves men to the end that they may serve their fellowmen. ¶ To seek in nature, the meaning of the Infinite Truth; to understand that the laws of growth are the laws of God; to believe that the melody of birds, the laughter of children, the unmeasured sacrifice of motherhood, and the ceaseless yearning of all men for a wider outlook and a nobler existence, are prophetic of the perfect joy and love of another world; and, so believing, to find rest, as in the shadow of a great rock, against all the storms that beset us; catching from the silence of the starlit nights, the peace of the autumn days, the solemnity of the boundless seas, that spirit of Hope and Faith, which soothes the hurt of grief, heals the wound of wrong, and calms the fever of doubt. ¶ To welcome the achievements of art and science, religion and learning, labor and law, under whose radiant banners battle the hosts of progress; honoring every honest student as the benefactor of his race, and every consecrated school as a bulwark of the Republic; and so to be loyal to the American university, as the home of American liberty, democracy, religion and culture. ¶ To guard with jealous care not only the ancient rights of human freedom, in whose name we shall destroy all wrong and oppression, but also the newer rights of social service, the ultimate purpose of whose ministrations shall be to give to every life, the opportunity to enjoy the earth in the fullness of its beauty and grace, its comfort and good cheer; holding fast to the conviction that whatever sweetens our natures, uplifts our ideals, strengthens our characters and disentralls our spirits, will bring us in the end into the full stature of a noble manhood; and, so inspired, to cling to the visions of our youth, and, despite the sordid struggles of the selfish world, to practice every day, as lads in college, and men in the world, the Faith of our Fraternity, thinking of it not only as the inspiring Ideal of a militant Brotherhood, but also as a creative force for the spiritual development of men, whose lives it shall dedicate to Love, glorify with Honor, and conquer for Truth. And so to be faithful to the Knighthood of Truth.

**TO BELIEVE IN THE LIFE OF LOVE, TO WALK IN THE WAY OF HONOR, TO SERVE IN THE LIGHT OF TRUTH—this is the Life, the Way, and the Light of Sigma Nu—this is the Creed of our Fraternity.** ★ ★ ★ ★ ★ ★ ★ ★